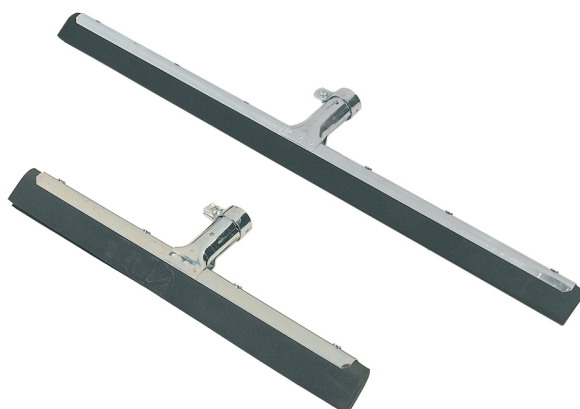




TECHNICAL DATA SHEET

Contico Product Range / Number: FS35, 45, 55, 75

Description: ZINC PLATED STEEL FRAME FLOOR SQUEEGEE



ITEM:	ZINC METAL FLOOR SQUEEGEE
OVERALL DIMENSIONS:	
FS35	350 x 137 x 36mm
FS45	450 x 137 x 36mm
FS55	550 x 137 x 36mm
FS75	750 x 137 x 36mm
RAW MATERIALS:	Synthetic rubber, Zinc plated steel frame
	(The following information might change if repacked for you order specifications, please check the Contico web site details Packaging and Waste information).
PACKAGE or UOM:	10 pcs Hollowed punch box 49 x 15 x 7 cm
Master	10 boxes in master carton 50 x 32 x 31 cm
Master gross weight	Kg 24.2

This data sheet has been created based on general information required by customers and data supplied by our manufacturers. The information given is to the best of our knowledge correct and will be updated when required by legislation or upon specific request. If further details are required please contact our Customer Services or your Contico Sales Manager.